

BUSINESS PORTFOLIO

SemArch (Pty) Ltd A 95% BLACK OWNED
ARCHITECTURAL CONSULTING BBBEE COMPANY

INTRODUCTION

SemArch (Pty) Ltd is an independent and owner managed South African Architectural practice. We believe in providing clients with a proficient service and innovative solutions. We strive to ensure that projects are within budget and delivered on time to our clients.

We are accredited as a Level 3 BBBEE contributor by Van Graan and Associates IRBA Registered Accountants and Auditors.

This is through the genuine empowerment of our own trained and mentored individuals in line with our company objective. SemArch came into being in November 2000 with the decision by ATD (Anglo Technical Division) to outsource their architectural requirements on a commercial basis. Since then, SemArch has developed into a medium sized architectural practice with an extensive portfolio in the mining, industrial and housing sectors.

BACKGROUND

SemArch was founded in November 2001 to service the mining, industrial and residential sectors and now also Government work

We are 95% Black owned

Directors have been ordinary employees and trained to take leadership roles within the company.

MISSION

To respond to needs of clients

To create appropriate and value added architectural solutions

To foster care for the environment and the community

To develop and transfer skills, expertise and resources

To broaden our client base across a diversity of sectors without compromising our service to existing clients

THE BOARD OF DIRECTORS

The board of directors comprises two Historically disadvantaged individuals in Mr. Christopher Moletsane and Mr. Alfred Khoza both of whom joined the company as technical staff. Both were groomed and trained to take leadership roles within the company. SemArch has now also appointed Mr. Tom Eden who is a qualified architect who brings with him a wealth of experience in Mining and Government Projects

Mr. Moletsane joined the company from its inception in 2000 and after his university studies and became a director in December 2004.

Mr. Khoza joined in 2006 as and has recently been appointed a director in February 2012. Mr. Eden became a shareholder in 2013.

CORE SERVICES

Our architectural services focus from conceptual design through to building completion. Designs are based on physical and social context as well as the most energy efficient solutions available. The design process includes co-ordination and resolution of services layouts within the building. Services include the following:

- Pre- feasibility
- Conceptual design
- Feasibility proposals
- Design development
- Technical documentation
- Local authority documentation where required
- Contract administration
- Project completion and handover
- Compilation of as-built drawings

OTHER SERVICES

In addition we also provide other related services through and in association with other professionals.

These include the following

- Geotechnical investigations
- Civil and structural engineering designs
- Electrical engineering
- Quantity surveying and project cost engineering
- Control and instrumentation design
- Procurement and construction management

ENVIRONMENTAL RESPONSIBILITY

SemARCH continually strives to produce buildings that are environmentally and resource efficient. This is done ensuring that serious consideration is given to every aspect from design, location and orientation to construction, operation and maintenance. We incorporate energy efficient systems and material such as

- Solar panels and heat pumps
- Insulated piping to minimize heat loss
- Geysers blankets
- Solar glazing
- Insulated walls, roof spaces and below slabs
- Ventilated roof spaces where required
- Heat exchange air conditioning systems
- Sensored lighting and the use of metered sanitary fixtures
- And many other available and proven energy efficient systems



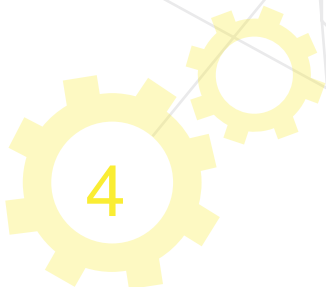
Society for the Care of Persons with Mental Handicap



SOCIAL RESPONSIBILITY

As Architectural professionals, it is always challenging to maximize on a limited budget and we have been successful in the implementation of Nkosi's Haven and Little Eden. The two organizations respectively are homes for HIV infected mothers and children and Kids with physical and mental disability.

We have worked with the two over the years and continue to do so as when required providing our services on a pro-bono basis. We have previously been involved in projects like the design and construction management of accommodation, offices, kitchens etc.



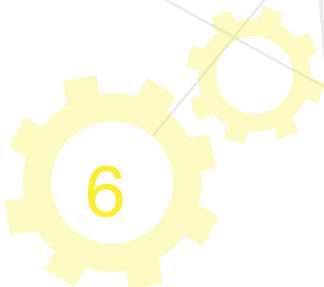
COMPLETED PROJETS

Project	Location	Client	Year
Venetia Housing Offices	Venetia Mine, Musina	De Beers	2005
Housing and Control Room	Fisnch Mine, Northern Cape	De Beers	2005
Thanda Thula Housing Development	Douglasdale , Johannesburg	Reeves Development	2006
Sishen Expansion Project	Sishen, Northen Cape	Kumba Resources	2006
SACE - WTP offices	Witbank	Anglo Coal	2007
Geita Implementation	Geita Mine, Tanzania	Anglo Gold Ashanti	2007
PPRust Expansion Project	Mokopane, Limpopo	Anglo Platinum	2008
Mafube Implementation	Mafube Mine, Mpumalanga	Anglo Coal	2008
Security Standards Project	Various Mines, Mpumalanga	Xstrata Coal	2008
Elders Implementation	Witbank	Anglo Coal	2009
Housing Relocation Project	New Denmark Colliery, Standerton	Anglo Coal	2009
New Largo Feasibility	Witbank	Anglo Coal	2009
Goedgevonden Implementation	Near Ogies, Mpumalanga	Xstrata Coal	2009
Feasibility For New Offices	Witbank	Anglo Coal	2009
Zondagsfontein Implementatioin	Mpumalanga	Anglo Caol	2010
Zondags Open Cast Implementation	Mpumalanga	Anglo Caol	2010
Phola Implementation	Phola Opencast Colliery , Ogies	Anglo Coal and BHPB	2010
Matimba Rec Club Conversion to New Science and Carreer Guidance Centre	Matimba Village, Witbank	Anglo Coal and Mpumalanga DoE	2010
New Auditorium and Offices	City West , Johannesburg	SAIW	2010
Zibulo Training Centre Feasibility	Mpumalanga	Anglo Coal	2011
Blaaukrans Workshop & Offices Implementation	Mpumalanga	Anglo Coal	2011
Simulator Training Centre Implementation	Mpumalanga	Anglo Coal	2011
New Largo Feasibility	Mpumalanga	Anglo Coal	2011
New Largo Stage 1 Implementation	Mpumalanga	Anglo Coal	2012
Kriel Block 7 Implementation	Mpumalanga	Anglo Coal	2012
Central Workshop Implementation	Mpumalanga	Anglo Coal	2012



Zondagsfontein Mine (Zibulo Colliery)

Description	:	Underground Coal Mine- building Infrastructure
Major Buildings	:	Mine Office Block, Shaft offices, Community Hall, Lamproom, Security Gatehouse, Workshops, Mine Stores, Flammable Stores, Bus Shelter & Entrance Signage
Client	:	Aglo Coal
Timeline	:	Pre-Feasibility/ Feasibility (2006-2007) Implementation (2008 - 2010)



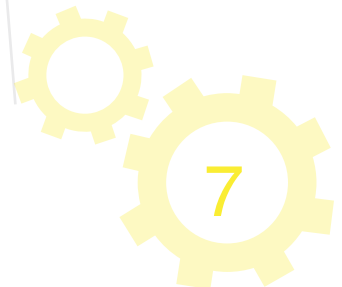


Phola Coal Processing

Description : Open Coal Mine - Building Infrastructure
Major Buildings: Main Office, Changehouse,
Gathouse, Wet Laboratory, Mine Stores and
Dry Laboratory

Client : Anglo Coal and BHP Billiton

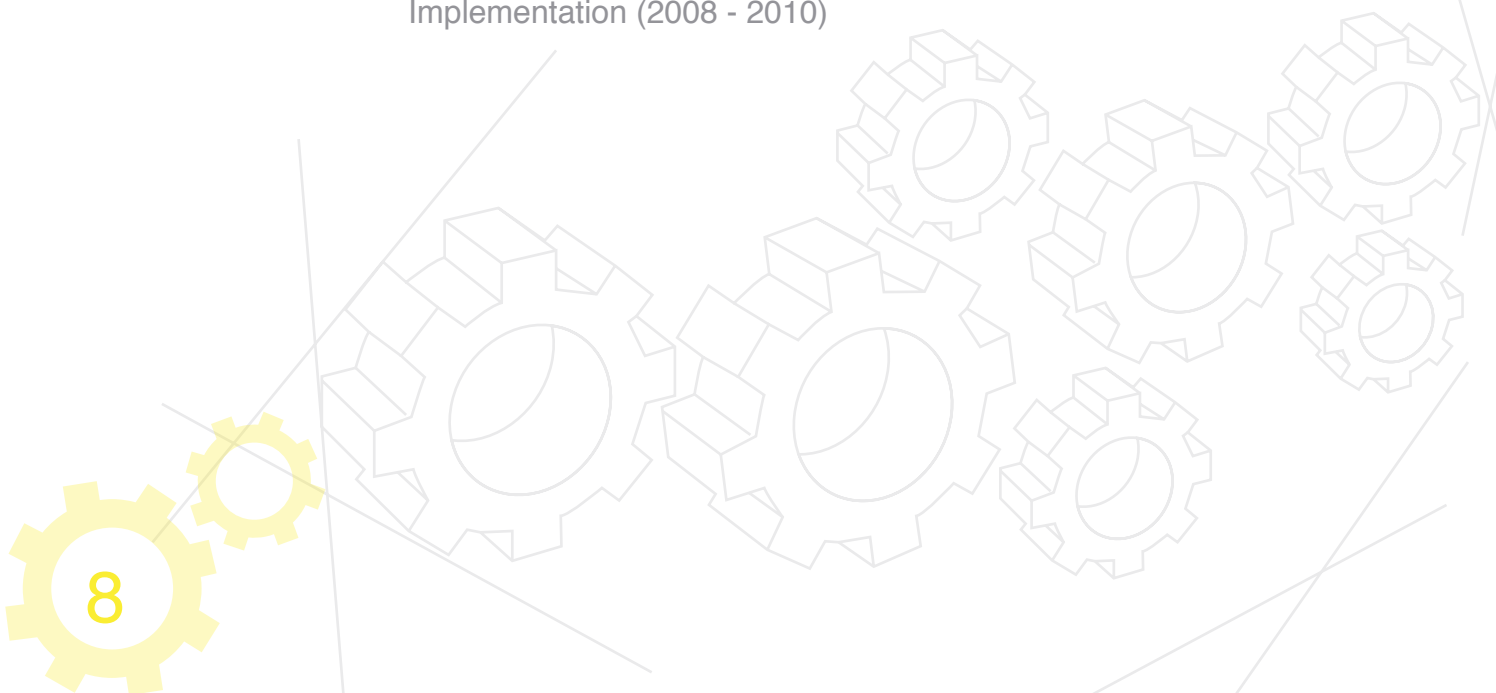
Timeline : Pre-feasibility/ Feasibility (2006 - 2007)
Implementation (2008 - 2010)





GOEDGEVONDEN MINE

Description : Coal Mine - Building Infrastructure
Major Buildings : Mine Administration Office and Development
Office Workshop and Changehouse
Client : Xstrata
Timeline : Pre-feasibility/ Feasibility (2006 - 20007)
Implementation (2008 - 2010)





Venetia Mine

Description	:	Townhouses for Mine Staff
Major Buildings	:	Two Story Units
Client	:	De Beers
Timeline	:	Pre-Feasibility/ Feasibility (2005) Implementation (2006 - 2007)



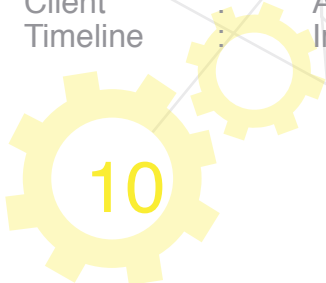
SACE - Ware Treatment Plant

Description	:	Plant Office
Major Buildings	:	Office Block
Client	:	Anglo Coal
Timeline	:	Pre-Feasibility/ Feasibility (2006) Implementation (2007)



Matimba Rec Club

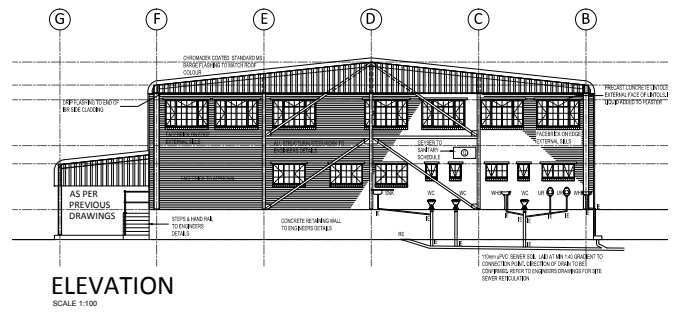
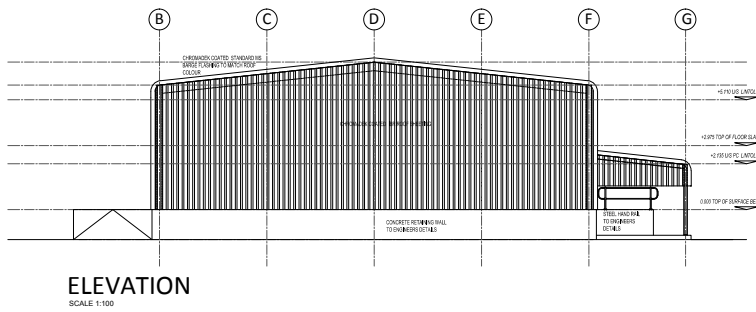
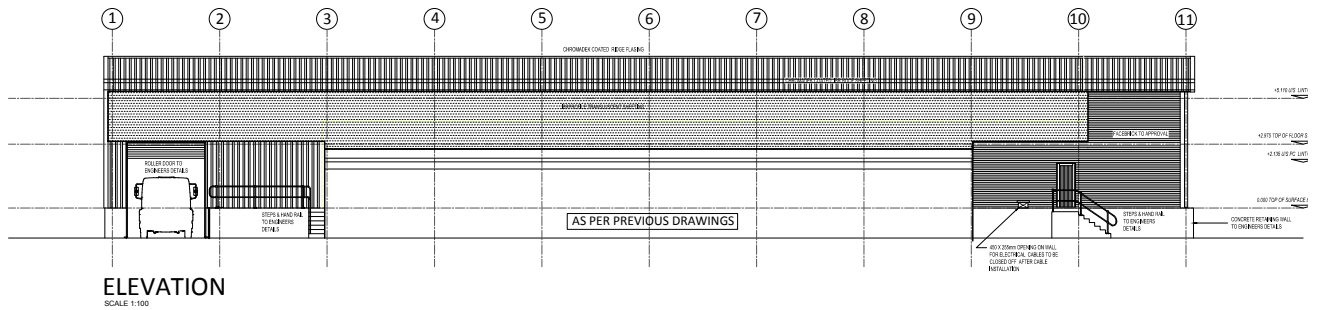
Description : Conversion of Existing Rec- Club into New Science and Career Guidance Center
Client : Anglo Coal / Department of Education
Timeline : Implementation (2007)





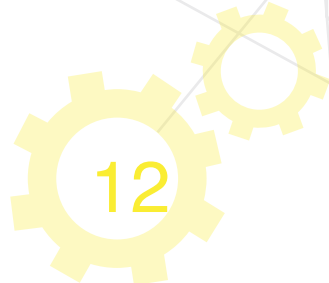
Anglo Regional Offices

Description	:	Proposed Office park - building Infrastructure
Major Buildings	:	Three Story Park
Client	:	Anglo Coal
Timeline	:	Pre-Feasibility/ Feasibility (2006 - 2007)



Kalagadi Umtu Shaft

Description : Various Mine Buildings
 Client : Kalagadi Manganese
 Timeline : Pre-Feasibility/ Feasibility (2009 - 2010)





Tel: +2711 833 1090
Fax: +2711 833 2310
8th Floor Samancor House
88 Marshall Street
Johannesburg
Website: www.semarch.co.za